



Holway Park Community Primary School

Shakespeare Avenue, Taunton, TA1 2JA | Tel: 01823 252126 | Email: office@holwaypark.somerset.sch.uk

Stargaze, Spirit, and Strive to Sparkle!

20th March 2026

Key Dates

MARCH 26

18-23 Book Fayre
31 - Parents Evening

APRIL 26

1 - Parents Evening
3 - GOOD FRIDAY - SCHOOL CLOSED
6 - EASTER MONDAY SCHOOL CLOSED
7-17 - EASTER HOL - SCHOOL CLOSED
20 - RETURN TO SCHOOL

MAY 26

4 - BANK HOLIDAY – SCHOOL CLOSED
11 - SATS week
19 – Yr6 Museum Trip
20-22 - Yr2 residential

**FULL ATTENDANCE AT SCHOOL IS
ESSENTIAL - REGULAR ABSENCE IS
REGARDED AS A CHILD
SAFEGUARDING ISSUE**

Safeguarding

Safeguarding our community is everyone's responsibility. If you see or hear something on school site that worries you, please speak to the school safeguarding team.

Update Contact Details

Pupil Data Collection Sheet



<https://forms.office.com/e/ckn2bHvw9m>

A message from Mrs Brewer, the Head Teacher.

This week is Neurodiversity Awareness Week-the children have been learning about differences and neurodiversity to support their understanding of how we are all different. It was really good to hear from the children about what they had been learning and how this links with our 4Ss particularly 'Spirit'; which is all about awareness and attitude. A visitor this week commented on the polite manners of the pupils here at Holway Park School which was a joy to hear.

British Values Workshops-The last group of classes participated in the workshop based around British Values. The feedback from these workshops has been very positive from both pupils and staff.

Residentials-The pupils participating in the Nettlecombe residential had an enjoyable experience and we currently have another group away on the London residential.

A big thank-you to those parents and carers who are supporting their children to be in school, regular attendance is essential for your child to learn, make progress and develop important social skills.

Schoolbag Checklist

After School Clubs End Date

All after-school clubs will finish on Friday, 27th March 2026

New club options will be advertised after the Easter break.

If you require after-school childcare, please book a space at Action Staytions through Scopay. If you need login access, please contact the school office.

Year 6 Bikeability – New Date!

13th & 14th July 2026 – New Bikeability sessions for Year 6!

We currently only have *1 space left!*

Please contact the school office ASAP to add your child's name.

Upcoming Trips & Events

Huish Woods – Year 2 Residential

20–22 May 2026

A few places are still available. Please speak to the school office if you would like to register your child.

Scholastic Book Fair

New Dates: 18th–23rd March 2026

Holiday Free School Meal Vouchers Changes

Please see the full article for detailed information.

ATTENDANCE

One day's absence could be as many as seven missed lessons, as well as time spent with friends and doing extracurricular activities. You can support your child's physical, social and mental wellbeing by ensuring they are in school every day.

It can be difficult to know whether your child is too ill to attend school. **NHS guidance is clear that it's fine to send them in with a minor cough or common cold.**

We know that parents and carers worry about their children's mental health. Rather than keeping your child off school, let us know about your concerns. We can then work together on supporting your child.

Attendance is regarded as a Safeguarding issue.

A big thank you to most parents who make sure their children attend school regularly. Your efforts, working in partnership with the school, will ensure that your child will have the best chance to achieve their potential and have real opportunity in further education and the world of work. It will also enable your child to:

- ✓ access the lessons needed to achieve their expected progress and standards
- ✓ maintain friendships and develop new ones
- ✓ have access to social and sporting events offered by the school
- ✓ develop work habits such as good punctuality which are essential to thrive in the world of employment

Parents will regularly receive Attendance Alerts if their child's absence is close to the government criteria for persistent absence.

Parental Responsibility for Attendance

Parents are legally responsible for ensuring their child's regular attendance at school. The department for Education and Somerset Council automatically monitor pupil attendance daily through the school registers.

The Department for Education informs the Headteacher every two weeks the monitored absence details of pupils. The school will make contact if your child is identified in this monitoring. If you are worried about your child/children's attendance the first person to contact is to discuss your concerns with the school PFSA Angie Bristow.

Parking Around School – A Polite Reminder

We kindly ask all parents and carers to continue parking **considerately** during school drop-off and pick-up times.

Parking outside school

Parking illegally or disrespectfully - Residents have complained about the illegal, inconsiderate and sometimes dangerous parking of parents/Carers before and after school.

We would like to make parents aware of the Highway Code 243 which includes the following: (from www.police.uk)

Pick-up and drop-off times are busy outside schools. This can cause an increased safety risk to both children and parents.

Parking restrictions outside schools are there to keep you and your children safe. Parking inconsiderately can put people in danger and you also risk being fined. It's important that motorists follow the [Highway Code](#).

Parking restrictions outside schools

Understanding yellow zigzag markings. Most school entrances and exits in the UK have yellow zigzag road markings with the writing 'School Keep Clear'. They indicate the part of the road where motorists should not wait, stop, or park a vehicle. Both yellow and white zigzags also show areas that must be kept clear so that children and other road users can see clearly when crossing the road.

Parking on yellow zigzags

Yellow zigzags without accompanying signs advise motorists not to wait or park there at any time for the safety of children and others. We can issue tickets for parking on them, based on causing an obstruction to other motorists or pedestrians. **DO NOT** stop or park:

- near a school entrance
- opposite or within 10 meters (32 feet) of a junction, except in an authorised parking space
- where the kerb has been lowered to help wheelchair users and powered mobility vehicles
- in front of an entrance to a property
- on a bend

Polite Reminder – Keeping Our Children Safe

We kindly remind all parents and carers to ensure children stay close and safe when arriving at and leaving school. Staff may still be driving or cycling through the school grounds until the gates are fully closed. Recently, there have been a few incidents where children have run or stepped into the road, narrowly avoiding cars. Please supervise your child carefully during these times. Children must keep to the designated paths around the car park at all times, unless directly supervised by an adult. This is essential for their safety.

We have also noticed some children climbing on the bike storage areas. This is extremely unsafe, and we are concerned that a serious accident could occur. Please remind your child not to climb on any of the bike racks or surrounding structures.

Finally, we are having a number of requests to use the toilet before and after school and is taking the office staff away from parent enquiries in the morning. Can we please ask parents to encourage children to use the toilet before leaving home in the morning and before leaving their classroom at the end of the day or wait until they arrive home.

Thank you.

Parents Evening

Important: Parent consultations for all children in the SEN Unit will be arranged separately. Their class teachers will contact families directly with appointment details.

We are pleased to invite parents and carers to attend our upcoming face-to-face Parent Consultations. These meetings provide a valuable opportunity to discuss your child's progress with their class teacher.

Appointments will take place in the School Hall on the following dates:

- **Tuesday 31st March 2026 – 4:00pm to 6:00pm**
(last appointment at 5:50pm)
- **Wednesday 1st April 2026 – 4:00pm to 7:00pm**
(last appointment at 6:50pm)
-

Each consultation will last up to 10 minutes.

Bookings can be made now via your Scopay account at: www.scopay.com

- Bookings close: Sunday 29th March 2026 at 11:45pm

We kindly ask parents to attend without children where possible. If this cannot be avoided, please ensure children are supervised at all times so that other meetings are not disrupted.

Before your appointment, please allow time to look through your child's books, as there may not be an opportunity to do so afterwards.

If you do not have access to Scopay, please contact the school office  office@holwaypark.somerset.sch.uk

Nettlecombe Court

Wow, what an amazing few day we had away at Nettlecombe last week. The children enjoyed staying in the stately home and climbing the stairs that were over 300 years old. The children showed great independence with making up their own beds and their lunches each day. We took part in team games, mini beast hunts, eating s'mores around the campfire in the hail stones and den building. The highlight was catching all the different species in the stream from freshwater shrimps to a young elver (baby eel).

Eco-Day

Our recent ECO Day was a fantastic success! Pupils and staff came to school dressed as animals to help raise money for WWF, with the aim of adopting some animals for our school. Throughout the day, children learned about different endangered animals, created projects based on their chosen animal, and enjoyed taking part in a fun scavenger hunt around the school. Thanks to everyone's enthusiasm and generosity, we raised an amazing £218.

We also had the pleasure of showing two of our governors around the school during the afternoon. They both commented on how engaged the children were in their learning and how wonderful it was to see both pupils and staff embracing the day by dressing up.

The ECO Committee will now be voting on which animals we would like to adopt, and we look forward to sharing the results with you soon!

Food Bank Donation

A huge thank you to all our families who have generously contributed to our Food Donation Appeal. Your generosity is already making a difference to local families who need a little extra support.

Holway Caterers

Holway Caterers operate independently from the school; they do not have access to pupils' personal data. To help them allocate payments correctly, please ensure that your child's surname is included as a reference when making a BACs payment. They also kindly request that payments are made promptly. If accounts fall into arrears, Rita will contact parents directly with a letter regarding outstanding balances.



Children's Mobile Phones in School

Children should only bring a mobile phone to school if they are **walking home alone** or have a **specific reason agreed with the school**.

Please remember:

- **Phones must not be taken into the classroom.**
- All phones should be **switched off** and **handed in to the school office before school starts**.
- Phones will be kept securely and can be **collected from the school office after the child leaves**.

This practice helps us keep children safe and avoid distractions during learning and follow recent Government guidance on mobile phones in school. Thank you for your cooperation!

Happy Healthy Holidays

Happy Healthy holidays details have been sent to those that are eligible for Free School Meals. Bookings are now open. Please contact the school office if you missed the communication.

Uniform

We would like to make you aware that we have recently noticed some pupils are not adhering to the school uniform and PE uniform expectations. To support all families, can we please ask you to review the schools uniform policy on the school website: <https://www.holwaypark.somerset.sch.uk/school-uniform-2> and check that your child's uniform is correct and fully compliant with the school requirements. If your child arrives in incorrect uniform, their class teacher will send home a note or letter explaining the reason, so that the issue can be addressed promptly.

If you are experiencing any difficulties in obtaining the correct uniform, or if you need support, please speak to the school office. We are always happy to help where we can.

Since the weather is improving, we will aim to place the lost property outside the front of the school office over the coming days, as we currently have a large amount. Please take a moment to check if any items belong to your child. Please remember to **clearly label all school belongings**, including **hats, coats, and gloves**. This helps us return lost items to the right children quickly and easily.

Thank you for your continued support in helping us maintain high standards across the school. If you have any questions or require further clarification, please do not hesitate to contact us.

Head Bumps

Have you ever wondered why we contact parents when a child has a head bump? We do this to ensure you are informed of the incident and enables you to monitor your child afterwards. Most of the time this is nothing to worry about, but it is a good idea to keep an eye on them for the next 24-48hrs. If something doesn't feel right or you are worried at all, it is always best to get advice from a healthcare professional. Things to look out for are severe headache, repeated vomiting, being confused, sleepy and cannot be roused.

Scooter and Bike Security

Can we remind you to ensure that your child securely locks up their bikes and scooters when they are left at school or in public areas. Unfortunately, unsecured items can be an easy target for theft, and taking a moment to use a sturdy lock can help keep your child's belongings safe.

Free School Meal Voucher Changes

There are upcoming changes to the Holiday Free School Meal voucher scheme. Government funding for Free School Meal vouchers will come to an end on 31st March 2026 and will be replaced by a new initiative called the “Crisis and Resilience Fund.”

Families who were eligible for vouchers will have received them as usual during the February half-term. However, this was the final issue of holiday food vouchers, and none will be available after 31 March. Unfortunately, this means that **no vouchers** will be provided for the Easter holidays, as these fall in April this year.

The new Crisis and Resilience Fund will offer access to food support and any family facing food shortage will be able to secure ‘cash-first’ assistance. Somerset Council will be working with a new provider for this service, and we are currently awaiting further information on how families will be able to access this support.

Somerset Council is in the process of making that switch and finalizing the new arrangements with a designated provider. They will be starting this scheme shortly, and it will be in place before the May half term holidays.

In the meantime, if you are concerned about managing during the Easter holiday period, please be aware that there is ongoing support available across the county:

- The Local Pantry Network:
<https://www.somerset.gov.uk/health-safety-and-wellbeing/the-local-pantry-network-in-somerset/>
- Help 4 All:
<https://connectsomerset.org.uk/help4all/>
- Community Hubs:
<https://www.somerset.gov.uk/news/community-hubs-connect-somerset/>
- SASP – Happy Healthy Holidays
<https://www.sasp.co.uk/happy-healthy-holidays>
- Healthy Start – NHS – Healthy Food and Milk
<https://www.healthystart.nhs.uk/>

We will follow up with further information as soon as we have more details.

Spring Clubs Reminder

CLUBS WILL END: FRIDAY 27TH MARCH

Please note:

- Clubs **finish promptly at 4:15 pm.**
- Collection points for each club are listed below (please check carefully to avoid confusion).
- **If your child will not be attending a club, please inform the school office.** We need to know where children are to keep them safe.
- **If someone other than a parent is collecting your child,** please let the office know in advance.

Thank you for your support in ensuring smooth running of the clubs and collections!

Club Collection Points at 4.15pm		
Monday	Pick Up Point	Gate
Art Club (Years 1 & 2)	Eden Classroom	KS1
Boardgames Club (Years 1 & 2)	Avon Classroom	KS2
Construction Club (Years 1 & 2)	Tweed Classroom	KS1
Colouring Club (Years 1 & 2)	Medway Classroom	KS1
Colouring Club (Years 3,4,5 & 6)	Dart Classroom	KS2
Dance Club (Years 3,4,5 & 6)	Dove Classroom	KS1
Eco/Gardening/Forest School (Years 3,4,5 & 6)	Mersey Classroom	KS2
Football Club (Years 1 & 2)	KS2 Playground	KS2
Lego Club (Years 3,4,5 & 6)	Medway Classroom	KS1
Story Writing (Years 3,4,5 & 6)	Derwent Classroom	KS1
Tuesday	Pick Up Point	Gate
SATS Booster Club (Year 6)	Thames Classroom	KS2
TT Rockstars (Years 3,4,5 & 6)	Derwent Classroom	KS1
Wednesday	Pick Up Point	Gate
Chess Club (Years 3,4,5 & 6)	Main Entrance	N/A
Football Club (Years 3,4,5 & 6)	KS2 Playground	KS2
Lego Club (Years 1 & 2)	Dove Classroom	KS1
Multi Skills Club (Years 3,4,5 & 6)	KS2 Playground	KS2
Thursday	Pick Up Point	Gate
Drama Club (Years 5 & 6)	Main Entrance	N/A

Action Staytions

We have some exciting events coming up in Action Staytions Wrap Around Care Provisions. Please contact the school office or Action Staytions staff to book your place.

ACTION STAYTIONS

Spring Term Events

W.C. 09.03.26 / 23.03.26

Messy Monday	Hands on art/crafts and sensory activities
Techie Tuesday	Get all "techie"
Whacky Wednesday	Variety of fun games to suit all ages
Thinking Thursday	Trivia, puzzles and problem-solving fun
Fun Friday	Choice of fun activities and games Includes parachute games, table tennis and more.

W.C. 16.03.26 / 30.03.26

Move It Monday	Dance and yoga
Try It Tuesday	Construction/lego challenges
Wild Wednesday	Outdoor/nature activities
Thoughtful Thursday	Jewellery, keyrings and loom bands
Food Friday	Cooking

Home Reading will also be carried out during each session

Pricing and Hours
 3:15pm to 4:45pm - £6
 3:15pm to 5:45pm - £9

Contact Information
 Bookings: 01823 252126
 More information: 07547113622
 Miss Conway / Mrs Salisbury

A wrap around care provision at Holway Park School. Run by two experienced members of staff providing a range of exciting activities for children supporting whatever their interests may be. Price Includes activities, resources and refreshments, was well as access to special events.



CLASS ACTIVITIES

SWIMMING

Avon and Dart (Tuesday) 06.01.26 - 31.03.26	Severn (Thursday) 26.02.26 - 21.05.26
Derwent (Tuesday) 21.04.26 – 21.07.26	

CLASS	PE DAYS <i>Children to come into school dressed in their PE Kits</i>	READ ALONGSIDE <i>Start: 2:45pm End: 3.10pm Arrive 5 mins early to check in</i>	BOARDGAMES <i>Start: 2:45pm End: 3.10pm Arrive 5 mins early to check in</i>	WOODLANDS <i>Children to come to school dressed in clothing /footwear which can get muddy and coats to keep warm.</i>
EDEN	Friday- Indoor PE	18.03.2026	N/A	N/A
DOVE	Friday- Indoor PE	11.02.2026	12.03.2026	N/A-
TWEED	Monday - Outdoor PE Wed - Indoor PE	04.02.2026	12.02.2026	03.03.2026
MEDWAY	Thursday - Indoor PE Tuesday - Outdoor PE	28.01.2026	05.03.2026	13.01.2026 & 24.03.2026
TAMAR	Tuesday – Outdoor PE Thursday - Indoor	21.01.2026	12.02.2026	10.03.2026
SEVERN	Monday - Outdoor PE Thursday - Swimming	25.03.2026	26.02.2026	15.01.2026 & 17.03.2026
AVON	Tuesday - Swimming Friday - Outdoor PE	25.02.2026	26.03.2026	29.01.2026 & 02.04.2026
DART	Tuesday - Swimming Friday - Outdoor PE	11.03.2026	15.01.2026	12.02.2026
DERWENT	Tuesday - Indoor PE Friday - Outdoor PE	14.01.2026	22.01.2026	26.02.2026
MERSEY	Monday - Indoor PE Wed - Outdoor PE	04.03.2026	29.01.2026	22.01.2026 & 31.03.2026
THAMES	Monday - Indoor PE Wed - Outdoor PE	01.04.2026	05.02.2026	20.01.2026 & 26.03.2026

'Achieving healthier and happier communities through physical activity and sport'



EASTER HOLIDAY CHILDRENS CRICKET COACHING

FROME YMCA

9th April
Softball Cricket School Yrs 2, 3, 4
Softball Cricket School Yrs 5, 6, 7

PERROT HILL SCHOOL, CREWKERNE

7th April
Softball Cricket School Yrs 2, 3, 4
Softball & Hardball Cricket School Yrs 5, 6, 7
8th April
Softball Cricket School Yrs 3, 4, 5, 6
Hardball Cricket School Yrs 7, 8, 9

WESTON COLLEGE

14th April
Softball Cricket School Yrs 2, 3, 4
Softball & Hardball Cricket School Yrs 5, 6, 7
15th April
Softball Cricket School Yrs 3, 4, 5, 6
Hardball Cricket School Yrs 7, 8, 9

WELLS CATHEDRAL SCHOOL

14th April
Softball Cricket School Yrs 2, 3, 4
Softball & Hardball Cricket School Yrs 5, 6, 7
15th April
Softball Cricket School Yrs 3, 4, 5, 6
Hardball Cricket School Yrs 7, 8, 9

CENTRE OF EXCELLENCE, SCCC TAUNTON

10th April
All Round Cricketer School Yrs 2, 3, 4
All Round Cricketer School Yrs 5, 6
Blast Batting School Yrs 7, 8, 9
16th April
Specialist Bowling - PACE, School Yrs 7, 8, 9, 10
All Stars Mini Cricket, School Yrs R, 1, 2



Could you tell if your child was being exploited?

Join one of our free online sessions led by Child Exploitation Prevention Officer **Andri Nicolaou**

18 March 7:00 - 8:30pm **30 March 10:30am - 12:00pm**

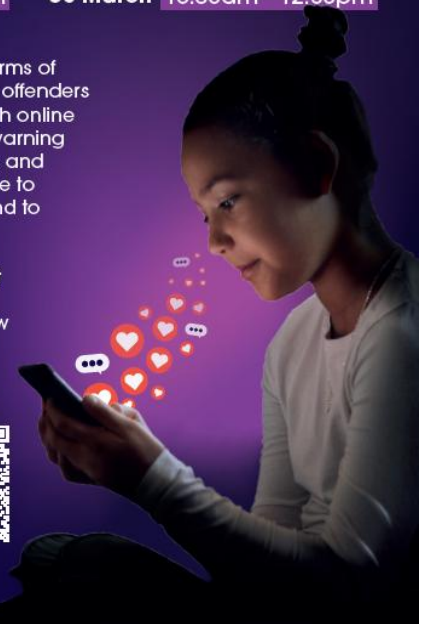
Learn about the different forms of child exploitation and how offenders groom/exploit children both online and offline. We'll highlight warning signs a child may be at risk and practical steps you can take to keep them safe and respond to any concerns.

Visit the **Avon and Somerset Police Eventbrite page** or scan the QR codes below

18 March



30 March



WE MAKE FOOTBALLERS.

ACCESSIBLE, SKILL BASED FOOTBALL FOR 4-12 YEAR OLDS
TAUNTON

CLAIM YOUR FREE SESSION



Group sessions built around our proven coaching method, designed to help every player improve - whatever their level.

SCHEDULE & PRICE

3-7 YEAR OLDS 8-12 YEAR OLDS

Tuesday 6.30-7.40pm	Friday 5.30-6.30pm
£80 for 10 sessions	£80 for 10 sessions



ALL YEAR TRAINING



TOP FACILITIES!



ALL ABILITIES WELCOME



FOR EVERY JOURNEY

GET IN TOUCH

✉ [taunton@wemakefootballers.com]
☎ 07949695362

WHERE WE TRAIN

Tuesday & Friday
Taunton

TRUSTED BY OVER 100,000 PARENTS

